



Empowering Healthcare and Science

A scientist wearing a white lab coat, blue gloves, a blue hairnet, and a white face mask is working in a laboratory. They are holding a small vial and using a pipette. The background is a light blue gradient with various scientific icons overlaid, including flasks, test tubes, and molecular structures.

Product Catalogue

LIFE SCIENCES

"Improving patient and customer outcomes by empowering healthcare and science through the consultation and provision of value-based smart and innovative products"

Mediscope International Limited is a 100% New Zealand owned company with a focus on facilitating procurement and distribution of leading healthcare and scientific brands and products to the medical and laboratory sectors in the Oceania region.

We ensure that the acquisition is favorable so that the goods, services or works are appropriate and that they are procured at the best possible cost to meet the needs of the clients in terms of quality and quantity, time, and location.

Our success is driven through the representation of trusted brands and in partnership with our distribution channel by providing unrelenting commitment to customer services, client relations and after sales service and support.

Purification

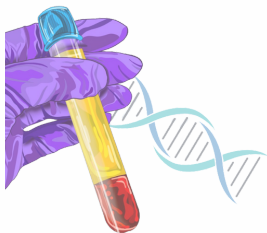
Total

Mag-Bind® TotalPure NGS SKU - M1378-01

Mag-Bind® TotalPure NGS offers an easy-to-use, reliable solution for the purification of both DNA and RNA for next-generation sequencing workflows with high recovery rates.

This product is designed for both manual and fully automated purification of DNA and RNA samples, as well as for the purification of PCR products. The system combines Omega Bio-Tek's proprietary chemistries with reversible nucleic acid-binding properties of magnetic beads to selectively bind fragments and eliminate excess nucleotides, primers, and small, non-targeted products such as primer-dimers.





DNA Clean-Up and Concentration

- Clean-up and concentrate all sizes of DNA in minutes
- Clean-up and extract DNA from agarose gels and contaminants including enzymes, primers, nucleotides and endotoxins
- Efficient DNA clean-up from enzymatic reactions, including PCR and sequencing reactions
- Simultaneously clean-up and normalize PCR products for NGS
- Ideal for concentrating DNA purified from plasma, serum, urine and other bodily fluids
- Purified DNA is suitable for a variety of downstream applications, including PCR, sequencing, ligation, RNA transcription, radiolabeling, arrays and more

Total Genomic DNA Purification Kits

- Isolates total genomic DNA from a wide range of specimens including cells, bacteria, yeast, plants, tissue, FFPE, soil, saliva, urine, blood and many more
- Available in spin column format, 96 well plates, and magnetic beads
- Efficiently extract inhibitor-free total genomic DNA
- Purified DNA is suitable for sensitive downstream applications such as PCR, qPCR, genotyping & sequencing

Plasmid DNA Purification Kits

- Purify all sizes of plasmid and BAC DNA with the highest integrity and the highest quantity
- Available in spin column format, 96 well plates, and magnetic beads
- Process versatile culture input volumes
- Compatible with any culture type
- The purified plasmid DNA is ready for restriction digestion, bacterial transformation, sequencing and more

Cell-Free DNA Purification Kits

- Isolate all sizes of cell-free circulating DNA from plasma, serum or urine
- Process versatile sample input volumes
- Concentrate cell-free circulating DNA into small elution volumes
- Isolate inhibitor-free circulating DNA
- Purified DNA is suitable for a variety of downstream applications, including NGS
- Compatible with fresh and preserved samples collected on any type of preservative.



Purification is based on spin column chromatography that uses Norgen's proprietary Silicon Carbide resin separation matrix. Benefits include broad spectrum RNA binding, high sensitivity, carrier RNA-free extraction and Phenol/Chloroform-free extraction



Total RNA Purification Kits

- Extract high quality and purity total RNA, including miRNA, from a wide range of specimens
- No phenol step required
- Bind & elute all RNA irrespective of size or GC content, without bias

Cell-Free RNA Purification Kits

- Isolate all sizes of cell-free circulating RNA including exosomal RNA from plasma, serum or urine
- Process versatile sample input volumes
- Concentrate circulating RNA into small elution volumes
- Isolate inhibitor-free circulating RNA
- Bind and elute all sizes of circulating RNA irrespective of size or GC content, without bias
- Purified RNA is suitable for a variety of downstream applications, including Small RNA Sequencing

RNA Clean-Up and Concentration

- Clean-up and concentrate total RNA in minutes
- Ideal for concentrating RNA purified from exosomes, plasma, serum, urine and other bodily fluids into small elution volumes.
- Purify all sizes of RNA, from large mRNA down to miRNA
- Clean-up RNA from contaminants including enzymes, primers, nucleotides and endotoxins
- Efficient RNA clean-up from enzymatic reactions, including labelling and DNase treatments

Lab Equipment

Dynex DS2 2-Plate ELISA Processing System

SKU - 62010

If you're a time strapped facility with high demands, the DS2 is the solution you're searching for. Designed to cut costs, save labour and enhance your speed, the DS2 2-plate ELISA processing system never compromises when it comes to unbeatable quality control.

- Fully automated open system that can be easily customised by the user to suit needs; such as assay parameters, assay steps, OD read settings, read calculations, quality control checks and report formats
- Excellent quality controls including the Electronic Signature Pipetting (ESP) which detects gross pipetting errors and therefore insufficient sample transfer as a result
- With a small footprint it utilises the same linear space as a manual incubator and reader
- Installed in over 3500 labs worldwide, it has been used for critical applications such as; immunology, infectious disease, endocrinology, blood-chemistry, food safety and environmental testing, among others



VWR PCR Plate Centrifuge II

SKU - 76447-108

Quickly spins down droplets in PCR plates maximizing yield. Plates are inserted vertically and quickly spin to a maximum speed of 2800 rpm (580g). Most samples can be spun down quickly, in less than 20 seconds.

- Compact size with built-in timer and display
- Bushless DC motor
- Electronic braking system
- Accepts all popular PCR plates



Combi R515 Multi-Purpose Centrifuge

SKU - R515

- Real multi-purpose centrifuge for using both fixed angle and swing-out rotors
- Robust and practical benchtop design with smoothly working, motorized lid opening and closure
- For up to 15,000 rpm (24,000 xg) with 6 x 85 mL
- Large capacity swing-out rotor for 4 x 500 mL up to 4,500 rpm (4,300 xg) with a variety of tube-adaptors to be fit into 750 mL and 500 mL swing buckets
- Automatic rotor identification with imbalance cutoff and tracking
- Excellent temperature control
- Intuitive and easy control with extensively informative display.

High Speed Refrigerated Centrifuge

SKU - M15R

- Max.15,000 RPM with 24 hole rotor spec. that can cover all molecular biology works
- 10 x 5.0 mL, 24 x 2.0 mL or 4 PCR strip rotor with aluminum lid
- NEW "Easy-Lock" rotor lid with motorized mechanics for gentle "One-touch" lid opening and closure
- Tightly sealed rotor with two V-shape rubber rings and an O-ring
- Compact design and light-weight and ideal for very quiet and fast operation
- Easy to readable graphical LCD display
- Easy-to-clean, UV resistant surface and stainless steel chamber



SPROUT Plus Mini Centrifuge

SKU - HS120610

With an ergonomic design and useful safety measures, the Sprout Plus Mini Centrifuge is easy to use and brings increased efficiency to your lab. The weighted rubber base eliminates movement and dampens noise.

- Quick-spin options and tool-free SnapSpin rotors make it quick and easy to use
- Lid locking function designed for one handed use
- When fully loaded, it has a max speed of 6000 rpm



OPTIZEN NanoQ Lite Microvolume Spectrophotometer

Small micro sample analyzer with a simple yet sophisticated design and easy and convenient user interface (UI). It applies the Slope Algorithm, which is a light path optimization technique, to enable measurement of a wide range of absorbance.

- It can measure protein and conduct cell counting.
- The measurement result can be saved or downloaded to a USB flash drive or smartphone.
- User friendly design allows easy operation using the intuitive LCD screen and touch functions.
- Eliminates the need for separate computer system due to the main units providing controls for the device.
- The measurement data can be saved on the device to improve the spatial utilization and economic efficiency.
- The lightweight and small spectrophotometer is very compact with dimensions: 148 x 179 x 110 mm and weight of 1.4 kg.
- User can specify environmental factors, user preferences and types of protein.

BenchMate C12V High Speed Microcentrifuge

SKU - C12V

This Oxford Lab Products BenchMate C12V high speed centrifuge is compact, with a large digital display and intuitive and simple interface that makes it easy to set and view programs. The maintenance free brushless motor facilitates speeds of up to 15000 rpm.

- Lid lock safety features that automatically opens on run completion
- Dual shell metal enclosure and imbalance detection with auto cut-off safety system.
- Suitable for use in hoods or cool rooms with minimal heat generation due to its unique airflow design
- Can save up to 99 programs or be programmed/remotely controlled by your computer



Premium Upright Deep Freezer

ARA M/MD Series

These upright lab freezers are perfect for bulk or long term storage of laboratory products or samples.

Available in a range of temperatures to suit your labs needs

- Informative 7" display and touch screen control
- Data tracking and storage to chart recorder or through USB transfer
- Unique pin-less Block Condenser and Independent Compressor structures.
- Effortless Auto-Door with safe lock & unlock function
- Advanced Functionality with Intuitive Display and Control Panel

CO₂ Incubator

SKU - ARAP120

This fanless CO₂ incubator utilizes direct heating and therefore has a maximised inner capacity of 170L.

- No vibration, no maintenance of HEPA filter, no spread-out of contamination.
- Intuitive 7" control screen and informative display
- USB port for data tracking
- Temperature Control Accuracy: $\pm 0.2^{\circ}\text{C}$





BenchMate Digital Tube Rotator

SKU - OTR-24D

Ideal for a variety of laboratory applications that require the gentle mixing of biological samples, such as the mixing of blood samples in blood collection tubes to prevent coagulation, immunoprecipitation, latex agglutination assays and preparation of homogenous dispersions

- Adjustable speed ranging from 10-80 rpm in steps of, and with an accuracy of, ± 1 rpm.
- Timer setting from 1 to 99 minutes, and infinite mode.
- The angle can be adjusted from 0 to 90 degrees.
- Programmable – The user can set and save up to 9 user-defined programs (protocols).

BenchMate Four Plate Shaker

SKU - SP4-D

This shaker has a 3mm orbital motion for thorough mixing of solutions in microplates.

- Programmable pulse mode for vigorous shaking that alternates rotating direction
- Adjustable speed range from 200 to 1200 rpm
- Last run memory feature
- Compatible with all standard skirted microplates



BenchMate Orbital Shakers

This shaker is a platform shaker that enables orbital or lineal shaking of liquids and semi liquids, up to a maximum total weight of 7.5kg.

- Variety of different attachments available for different vessels
- Program mode allows user to define rotational direction, speed, run time, dwell time and sequence
- Available in 10mm (50 to 500 rpm) or 20mm (50 to 300 rpm) diameters
- Loop operation settings and last run memory feature

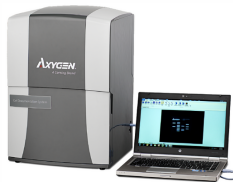


Oxygen Gel Documentation System

SKU - GD-1000

This system easily captures publication quality, 16 bit TIFF images with its 5.4MP resolution camera and image acquisition software. It is perfect for labs that want good value without compromising ease of use or image quality.

- The auto exposure tool calculates optimal exposure time, or you can manually adjust it with the slider whilst viewing the updated live image
- Transillumination bulbs last for 30,000 hours or 3.5 years of continuous use.
- Select ROI tool allows you to select a region of interest, this is useful for gels with intense or faint bands.
- Darkroom tab lets you select from UV302, UV 365 or EPI Blue light sources
- Imaging tools include: crop, rotate, resize, contrast, saturation and zoom, and annotation tools with various texts and drawing tools are a viable as well.

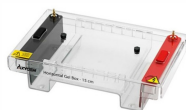


Oxygen MaxyGene II Thermal Cycler

SKU - THERM-1000

This thermal cycler makes method optimisation affordable and provides consistent, reliable results. With its precision thermal control it provides rapid heating and cooling by 6 independently temperature-controlled Peltier modules.

- Unique flexible programming above the pre-programmed standard protocols with a simple user interface and rapid run times
- Has a programmable temperature range between 4°C to 99°C with program memory of up to 200 complete programs
- Adjustable heated lid accommodates strips, tubes and microplates. It's sample capacity is 1x 96 well microplate, 128x 0.2mL strip tubes and 96x 0.2mL tubes



Oxygen Horizontal Gel Boxes

SKU - HGB-15

These horizontal gel boxes are high quality, full featured units that are designed for exceptional durability and efficiency. It features a leak-free external gel casting which allows you to cast 1 gel outside of the box while another is running inside.

- Available in 4 different sizes (7cm, 10cm, 15cm, 20cm) each with 2 sizes of gel trays
- Rugged injection moulding is supported by a 3 year warranty
- The 3 larger units come with recirculation ports which allow for buffer exchange
- The Oxygen contrast enhancer makes loading gels easier

Class II A2 Biological Safety Cabinet

SKU - BSC-1300IIA2-X

This NSF Certified Class II A2 microbiological safety cabinet meets the EN 12469:2000 standard and has 3 level protection: operator, sample and environment.

- Memory function in case of power failure
- 70% air recirculation with 30% air exhaust
- Suitable for working with microbiological research in the absence of volatile or toxic chemicals and radionuclides
- Motorised front window with large LCD display



Liquid Handling



BenchMate Manual Pipettes

Oxford Lab Products BenchMate Manual pipettes bring the durability and quality every scientist needs. They are designed for comfort, fatigue reduction, durability and precise pipetting. The BenchMate manual pipettes have a **5 year warranty** and have the option of single channel, 8-channel, 12-channel or multichannel pipette for 384-well plates, with volume ranges between 0.1µl and 10mL. The hyper blowout technology helps provide improved dispensing accuracy for micro-volumes and greater UV resistance makes them ideal for use under the hood work.

BenchMate E Electronic Pipettes

The BenchMate E Electronic pipettes are equipped with an intuitive graphic interface, with 5 different frequently used modes of pipetting. It's high performance stepper motor provides consistent and reliable results. It's built in power saving intelligent charging battery provides uninterrupted use. The BenchMate E also has the single, 8 and 12 channel options to suit your labs needs, with volume ranges between 0.5µl and 5mL. These features along with its ambidextrous, light weight ergonomic design provide comfort and versatility to scientists.

VWR® Classic Bottle Top Dispensers

VWR Bottle Top Dispensers are available to dispense wide range of volume starting from 0.25 ml to 100 ml. These are compatible with a wide range of chemicals & can be fitted on almost any bottle with help of adapters, that are provided with the Bottle top Dispenser.

VWR Bottle Top Dispensers for complete PEACE of mind.

- **Precise Performance** - Manufactured in ISO8655-5 facility & tested in ISO 17025 accredited lab
- **Effortless Dispensing** - 0.3 grade glass barrel and Teflon 'O' ring for smooth dispensing experience
- **Adaptable Mounting** - Free adapter to make it fit for almost any bottle
- **Contamination Free** - Ease of dismantling & cleaning without disturbing calibration
- **Ease of Use** - 360 degree rotating dispensing mouth, double sided graduation



VWR® PHP Single Channel Pipettes

- Easily adjustable ejector height system to accommodate virtually all brands of tips
- UV resistant and fully autoclavable
- Easy and quick recalibration system
- Colour coded shaft for easy volume identification
- 5000µl and 10000µl version with shaft: protected by filter



Accupet Pro Manual Pipettes

"The number 1 choice of pipette of many laboratories in more than 100 countries around the world"

- Thermo-plasto-elastomer casing ensures minimal heat transfer for high accuracy during continuous use
- Ergonomic lightweight design with finger hook for minimum hand fatigue
- Compatible with ALL standard pipette tips
- Single channel, 8 channel or 12 channel options
- Fully autoclavable



VWR® Standard Line Single Channel Pipettes

- Powerful refrigeration system cools to 4°C in 8 minutes
- Exceptionally quiet and compact
- Speed range of 500rpm to 13500rpm
- Backlit LCD display to easily view running parameter



VWR® Next Generation Pipette Tip Refill System

These tips are made of high quality, 100% pure, virgin medical grade PP. Made in the highest quality moulds, these tips can be used whenever the work demands a higher standard. These tips can be autoclaved at 122 °C for a maximum of 20 minutes at 15 psi.

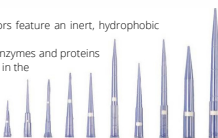
This range of pipette tips has 17 different tip styles available to choose from and they can be used to refill tip racks from VWR as well as other brands.

- Sustainable design based on virgin resins
- Packaging manufactured from 100% renewable materials
- A wide seal ensures tips will seal easily and consistently without leaking
- Guaranteed certified free of detectable DNA, DNase/RNase, endotoxins and heavy metals
- Tested for endotoxin (pyrogen) contamination
- Resins are pre-tested for metal contamination
- Graduated tips only: Graduations allow a visual check of pipetting accuracy



Barrier Pipette Tips

- These universal fit pipette tips for research grade pipettors feature an inert, hydrophobic barrier that prevents pipetting contamination.
- Low binding surface technology reduces binding of DNA, enzymes and proteins
- Aerosol barrier will not trap liquid or contaminate samples in the event of over-pipetting
- Available in various volume ranges from 0.1µl to 1250µl
- Ideal for molecular biology applications like PCR
- Exceptional accuracy and precision



J.T.Baker® Robotic Tips

The J.T.Baker robotic tips are designed for use in robotic liquid handling and research workstations such as Hamilton, Tecan, Perkin Elmer, and others.

With conductive robotic tips from Avantor, even small volumes can be dosed with high precision and without contamination. Conductivity enables the system to recognize the filling height and will provide a minimal immersion of the tip into the liquid, in order to ensure safe pipetting and dispensing. Conductive tips are produced under cleanroom conditions and tested from independent laboratories to be free of DNase, RNase, ATP and pyrogens. Each lot of these tips is tested according to the quality management system by Avantor to ensure reproducible application results.

- **Features and Benefits:**
- Manufactured under cleanroom conditions (cleanroom class 8)
- State of the art quality control
- Ideal for high-throughput analysis
- Barcoded trays for automated identification
- Packed in blister packs

Laboratory Consumables



Lab Drying Rack

SKU - HS120791

The most versatile rack in the market with channels designed for more useful configurations and it can be used on the counter or be mounted on the wall.

- Large and small pegs for all glassware varieties
- Designed to protect against breakage with pegs that are designed for a better hold for heavier pieces
- Holds up to 35kg
- Made of easy to clean durable polystyrene
- Sure grip hooks securely grip glasses into place
- One of a kind drying basket to collect small items

Flasks and Beakers

Made of 3.3 borosilicate glass, they have very good chemical resistance, minimal thermal expansion and high resistance to thermal shocks.

Flat Bottom Flasks

- Beaded rim
- Volume range from 50mL to 2000mL



Glass Erlenmeyer Flasks

- Narrow or wide neck options with beaded rim and wide graduation
- Volume range from 25mL to 5000mL



Borosilicate Glass Beakers

- Volume range from 5mL to 5000mL
- Low or tall form with spout and white graduation



Glass Laboratory Bottles

Made of borosilicate glass 3.3 simax, they have very good chemical resistance, minimal thermal expansion, high resistance to thermal shocks, complete with pouring ring and screw cap

- Autoclavable at 121°C and sterilisable when steamed at 134°C
- In compliance with ISO 4796
- Volume range options of 50mL to 20L



Conical Tubes - 15mL and 50mL

Manufactured from FDA approved resin and certified to be RNase-, DNase-, Human DNA, Endotoxin-, PCR inhibitor, lubricant, heavy metal and Pyrogen free.

- Can be centrifuged at up to 17000 x g and are capable of withstanding temperatures of +80°C to +121°C
- Fits all standard and high capacity centrifuge rotors



Graduated Glass Cylinders

Made of borosilicate glass, these cylinders have very good chemical resistance, minimal thermal expansion and high resistance to thermal shocks

- In compliance with DIN EN ISO 4788
- Autoclavable
- Volume range options from 0.2mL to 20mL



VWR Autoclavable Yellow Biohazard Bags

Ideal for processing bio hazardous materials that require autoclaving prior to disposal. Available with or without temperature indicator. High integrity polypropylene bags withstand 135°C maximum autoclave temperature. PP, 50 µm thick, yellow.

- Twist-tie closure allows bag to expand and vent steam during cooling
- Bags resist punctures, tears and leaks, and they also meet the 165 g dart-drop standard as required by ASTM D1709-98
- Each bag is imprinted with the universal biohazard symbol



All biohazard bags have a temperature indicator patch with the words 'Contents Have Been Autoclaved' printed in a chemically active ink.



Microscope Slides ~ 1mm Thick

SKU - MS-1000000

Made of soda lime glass of third hydrolytic class in compliance with DIN ISO 8037/1.

- Plain or frosted options with cut or 90° ground edges
- 20mm silky frosted marking area on both sides
- Autoclavable, pre cleaned and ready for use.

Cardboard Cryogenic Vial Boxes

SKU - HS2860C

These boxes are for storage or small samples and tubes with changeable partitions for users needs.

- Can be stored in freezers or vapour phase LN2 -196°C
- Bottom vent holes allow quick circulation, removal of cold air, vapour or LN2.
- Partitions: 10x10, 9x9, 8x8, 7x7



81-Well Microtube Storage Box

SKU - HS120040

Compact, stackable polypropylene microtube and cryogenic vial storage for 1.5/2.0mL tubes.

- Store down to -80°C
- Black light tight version for light sensitive samples
- Autoclavable with easy open friction fit lid.
- Alphanumeric identification



Clinical 4-Way Tube Rack

SKU - HS120683

The only tube rack specifically designed to hold all brands of 13 and 16mm round, flat and 15mL conical blood collection tubes and culture tubes.

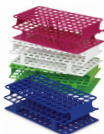
- The 6 way connection options allows you to link different or the same size wells, side to side, in any orientation to customise numbers of wells as required.
- Assorted colours for colour coding identification
- Robust, chemical resistant polypropylene for easy cleaning
- Can be used in water baths and freezers.
- Holds tube volumes of 3.5, 7.0, 10mL and 15mL

OneRack Tube Rack

SKU - HS275138

These durable racks are molded in a single, continuous piece so no assembly is required

- Available in 5 different tube diameters
- Stable design for use in water baths
- Unique tear drop shaped openings for better retention of tubes
- Offers the highest chemical and heat resistance -40°C to +121°C



Fold and Snap Test Tube Rack

SKU - HS2430738

These easy to assemble polypropylene tube racks fold and snap together.

- Can be used in water baths, and it's open design allows samples to be incubated at the same temperature
- Autoclavable and designed for optimal tube stability



96-Well PCR Cooler

SKU - HS120727

These ice-free cooling systems for PCR preparation and storage maintain a sample temperature of 0°C for over an hour.

- Cools faster in freezer and stays cold longer
- When temperature of +6°C is reached, a colour change occurs to alert user
- Its well design prohibits the freezing of samples



Adapt-A-Rack Flexible Tube Rack

SKU - HS120187

This tube rack has flexible slots to accommodate 5mL to 50mL tubes

- Holds tubes in firm upright position and racks can be linked together for increased capacity
- Open sides allow for easy label viewing
- Autoclavable



80-Well Microtube Racks

SKU - HS29025G

These racks fit microtubes of 1.5-2.0mL

- Made of polystyrene, they are autoclavable
- Easy fill and transfer 80 tubes in a compact arrangement
- Molded in coordinates to assist with organisation



Advanced Tissue Diagnostics



**Diagnostic
BioSystems**

Primary Antibodies

FITC Antibodies

FITC Conjugated Antibodies
CF₄₀-488 FITC Antibodies

Detection Systems

Polymer Based Detection Systems
PolyVue Plus™ Two Step Detection System
UnoVue Plus™ One Step Detection System
UnoVue Plus™ Detection Components
Streptavidin Biotin Based Detection Systems

Chromogens

Chromogens for AP
Chromogens for HRP

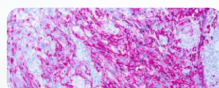
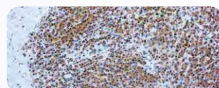
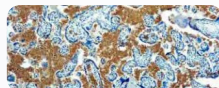
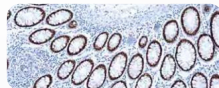
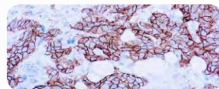
Antigen Retrieval

Antigen Retrieval Solutions
Montage Opus Antigen Retrieval System

Ancillary Reagents

ImmuHisto-Sealer
Blockers
Chromogen Enhancers
Buffers
Mounting Media

Special Stains



Microscopes

Motic has been a global leader in providing innovative microscope and microscopy solutions, with their premium quality microscopes and accessories being used in a variety of applications, ranging from live cell inspection to viewing blood cells for research.



BA210 Series Compound Microscopes

The BA210 Series microscopes are high quality basic biological microscopes that are designed with ease of use and longevity in mind.

- The high quality optical glass enhances images even with weak slide staining
- Consistent diopter adjustment that enables perfect usage of reticles for measuring and counting
- These microscopes have been designed for user comfort with ergonomic viewing angles and large field of view for fatigue-free viewing
- Option of Binocular, Trinocular or Upright with either Halogen or LED illumination
- Option of phase contrast in 10X and 40X magnification with phase contrast slider, and/or dark field slider for 10X to 40X

Moticam X5 Plus Microscope Camera SKU - MOTICAMS

The Moticam X5 Plus transfers live images up to 30 fps and captures images at 4.0MP. It also allows you to integrate it to your own network either via Wi-Fi or Ethernet cable, allowing more users to be connected. Share your images using the Motic Images Plus Software for computers or connect with up to 6 devices at the same time using the MotiConnect app on your tablet or smartphone. The app allows you to capture, edit and store your microscope images.



AE2000 Inverted Compound Microscopes

The AE2000 is Motic's new inverted microscope that is ideal for routine live cell inspection.

- Superb optical quality
- Auto on/off function to extend power supply
- Binocular or Trinocular options
- Modular interchangeable illumination concept between Halogen and LED
- Improved phase contrast quality

SMZ171 Series Stereo Microscopes

The SMZ171 stereo microscope line uses modern ESD resistant materials and optimized LED illuminations for a wide range of biomedical and material science applications. The optical performance with improved transmission rates in higher magnifications is combined with reliable mechanics making it the ideal instrument for the demanding requirements for both routine and research fields.

The Greenough optical system comes with a large scale zoom range of 6.7:1, parfocal at all magnifications; while a 5-position click-stop mechanism implemented in the continuous zoom enables precise reproduction of magnifications for easy measurements. It's enhanced and crisp depth-of-view produces consistent and convincing 3-dimensional upright images. The working distance of 110mm in its standard configuration gives sufficient space for any kind of sample viewing and manipulation. Choose from Binocular or Trinocular and Halogen or LED illumination.

